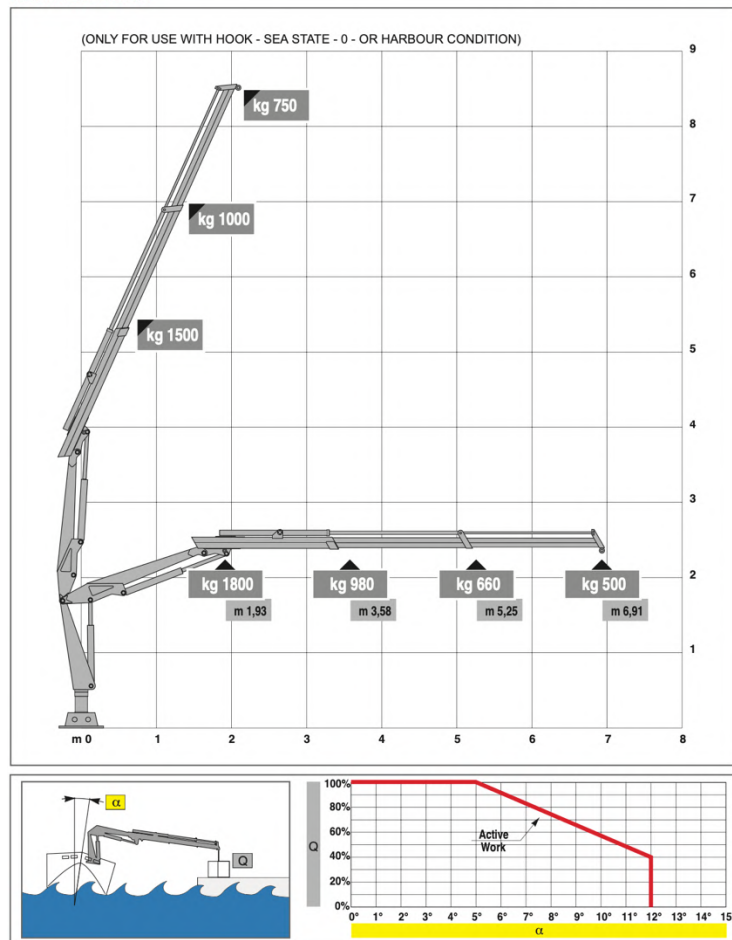


# MODULAR CRANE PONTOON VersaDock



FULLY FOLDABLE CRANE  
**HLM 3-2S** MODEL



Huge variety of uses such as Heavy Lifting, Piling, lifting pontoon spud legs and general marine works. Ultra-shallow draft allows us to access places larger multicats cannot reach. Can be mobilised by water or dismantled for road transport to site, crane can self-load and service its working deck and spud legs.

General	
<b>Vessel Name</b>	Rebel Barge
<b>Quantity</b>	Multiple Available
<b>Capacity</b>	24 Tonnes
<b>LOA</b>	12m
<b>Beam</b>	6m
<b>Draught</b>	0.15m
<b>Machinery</b>	Twin Electric Spud Leg Motors
<b>Crane</b>	Heila HLM 3-2S & Powerpack
<b>Manufacturer</b>	VersaDock/Heila/Rebel Marine



Equipment	
<b>Layout/Equipment</b>	1 x Foldable Marine Crane with Aux QR connections
	2 x 8m spud legs
	2 x Electric spud lifters
	Moonpool
	Pile Driving Frame
	Hydraulic Powerpack
	Handrailing/Cleats & Towing/Cargo Eyes
	Heavy Duty Fendering
	2 x Heavy Duty Loading Ramps
	Life Saving Equipment
Dive Ladder	
<b>Electrical</b>	LED navigation lights
	LED deck lights
<b>Optional Extras</b>	Hydraulic Grab Bucket and Rotator
	Hydraulic Crane Winch
	Generator
	Qualified Operator
	Swim End
	Welfare Cabins
	Workshop/Store



07495 234444

info@rebelmarine.co.uk  
www.rebelmarine.co.uk