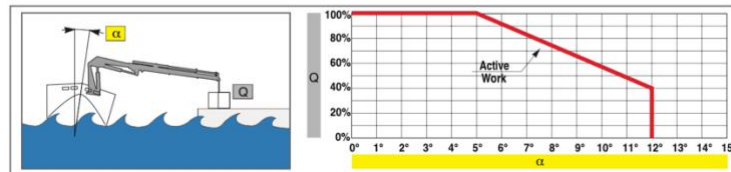
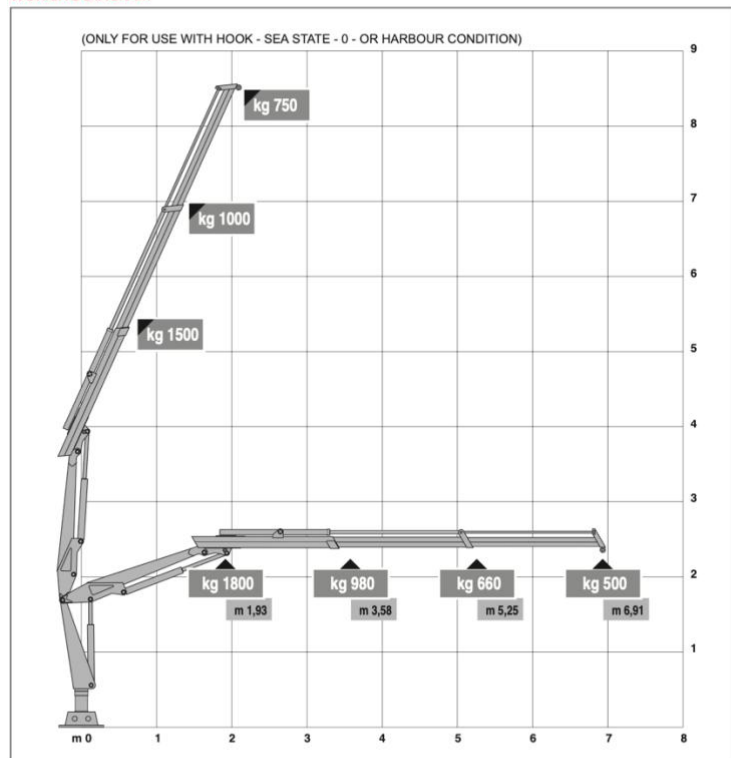




MODULAR CRANE PONTOON VersaDock



FULLY FOLDABLE CRANE
HLM 3-2S MODEL



Huge variety of uses such as Heavy Lifting, Piling, lifting pontoon spud legs and general marine works. Ultra-shallow draft allows us to access places larger multicats cannot reach. Can be mobilised by water or dismantled for road transport to site, crane can self-load and service its working deck and spud legs.

General	
Vessel Name	Rebel Barge
Quantity	Multiple Available
Capacity	24 Tonnes
LOA	12m
Beam	6m
Draught	0.15m
Machinery	Twin Electric Spud Leg Motors
Crane	Heila HLM 3-2S & Powerpack
Manufacturer	VersaDock/Heila/Rebel Marine



Equipment

Layout/Equipment	1 x Foldable Marine Crane with Aux QR connections
	2 x 8m spud legs
	2 x Electric spud lifters
	Moonpool
	Pile Driving Frame
	Hydraulic Powerpack
	Handrailing/Cleats & Towing/Cargo Eyes
	Heavy Duty Fendering
	2 x Heavy Duty Loading Ramps
	Life Saving Equipment
Dive Ladder	
Electrical	LED navigation lights
	LED deck lights
Optional Extras	Hydraulic Grab Bucket and Rotator
	Hydraulic Crane Winch
	Generator
	Qualified Operator
	Swim End
	Welfare Cabins
Workshop/Store	



07495 234444

info@rebelmarine.co.uk
www.rebelmarine.co.uk

