



Manitou MT1840

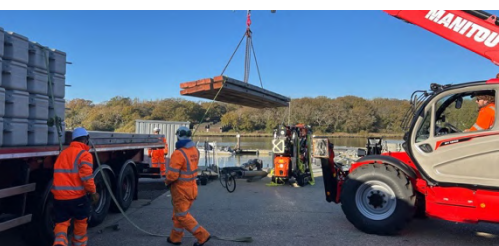


Our **Manitou MT 1840** telehandler offers the perfect balance of **power and precision**, designed to meet the demands of all your projects. Its **hydrostatic transmission** and wide load chart, especially when used with stabilizers, allow for safe lifting of loads **up to 18 meters high** and a **maximum lift capacity of 4,000kg** at minimum reach. This versatile model is suitable for a wide range of applications, including pallet handling, bulk material movement, unloading, and precise positioning of heavy elements on site. The Easy Connect System (ECS) enables fast and easy attachment changes, transforming the machine into a **high-performance multi-tool**. With its **wide stabilizers**, **high ground clearance**, and **integrated tilt correction system**, the MT 1840 ensures excellent stability and manoeuvrability, even on rough terrain.



General

Vessel Name	Rebel Manitou – MT1840
Length	6150mm
Width	2360mm
Capacity	4,000kg and 18m Reach
Manufacturer	Manitou



Features

Details

- Compact, strong and robust
- Precisely manoeuvrable
- Adjustable forks
- Towbar
- Trailer lighting socket
- 2 wheel steer, 4 wheel steer, crab steer
- Euro hitch
- Joystick control
- Road legal
- LED lights

Attachments/ Optional Extras

- Bucket
- Fly Jib / Lifting Jib
- Front Tow Bar
- Heavy Duty Winch
- All Terrain Tipping Trailer
- Heavy Duty Loading Ramps
- Pontoons for water and boggy crossings
- Operator & Slinger/Signaller
- Grass / Bog Mats
- Crane trailer & bespoke lifting equipment

07495 234444

info@rebelmarine.co.uk

www.rebelmarine.co.uk

