

Vessel Specifications



RIB & Powerboat Charters
Corporate Entertainment
Team Building
Sight Seeing Tours

Commercial Charters
Workboats, Safety Boats, Guard Boats
Survey Boats, Landing Craft, Crew Transfer
Film & Media, Photography, Drone Platform
Cable Lay Support, Windfarm Support, Dive Support

Pontoon/Work Platform Hire and Water Access Solutions
Crane Pontoon, Marine Civils, Spud Leg Pontoons, Work Over Water



07495 234444

info@rebelmarine.co.uk

www.rebelmarine.co.uk





OUR FLEET



Rebel Anchorman

10m Multi Role Catamaran



Rebel Protector

9m Cabin RIB



Lightning Rebel

10m Open RIB



Beach Rebel

7m Open RIB



Rebel Rescue

5.5m Open RIB - Safety/Rescue Boat



Rebel Lander

7m Aluminium Landing Craft



Rebel Defender

6m Aluminium Safety/Work Boat



Rebel Six

5m Aluminium Safety/Work Boat



Rebel Five

5m Aluminium Safety/Work Boat



Rebel Four

4m Aluminium Safety/Work Boat



Rigiflex 400 - 1

4m Safety/Work Boat



Rigiflex 400 - 2

4m Safety/Work Boat



Rigiflex 360

3.6m Safety/Work Boat



Modular Pontoon

Built to any size and shape



Crane Pontoon

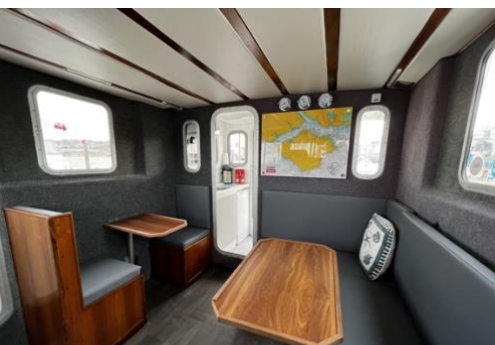
Modular Crane Pontoon



REBEL ANCHORMAN 10m Multi Role Catamaran



General	
Vessel Name	Rebel Anchorman
Coding	MCA Category 2 – 60 miles day & night
Call Sign	MEKR5
MMSI	235016877
Capacity	12 PAX + 2 Crew + 1000KG Cargo
LOA	10m
Beam	4.9m
Draught	0.8m
Machinery	2 x Iveco 280HP
Fuel	Diesel 1000L
Manufacturer	Blyth Catamarans
Speed Cruise/Max	15/27 Knots



Equipment	
Layout	Rescue Zone with MOB recovery cradle
	Full walk-around deck with mooring/towing bollards
	Large open aft deck - cargo area & mounting points
	Side door with dive ladder
Navigation/ Comms	3 x Simrad 12" & 7" touch screen plotters / sonar
	1 x Simrad 16" display & Simrad autopilot system
	Simrad open array halo radar
	Simrad RS40 fixed VHF/DSC & Icom fixed VHF/DSC
	Simrad wind system & 3 x digital instrument displays
	Simrad class A AIS Transponder
	Fusion stereo system & Loud hailer/siren system
Electrical / Welfare	CCTV Camera System
	Galley unit - microwave - oven/stove - hot/cold water
	Toilet and wash basin
	Heating, diesel and electric
	240V Generator & Inverter
	LED navigation, deck lights and blue strobe lights
Optional Extras	LED cabin lights white/red
	Survey boom
	Rescue boat/tender

07495 234444

info@rebelmarine.co.uk

www.rebelmarine.co.uk





REBEL PROTECTOR

8.5m Cabin Rib



General	
Vessel Name	Rebel Protector
Coding	MCA Category 3 – 20 miles day & night
Call Sign	MICH3
MMSI	232029921
Capacity	7 PAX + 1 Crew
LOA	8.5m
Beam	3m
Draught	0.8m
Machinery	1 x Yanmar 6LP 315HP
Fuel	Diesel 300L
Manufacturer	Rayglass NZ
Speed Cruise/Max	25/39 Knots



Equipment

Layout	MOB recovery cradle
	Forward deck access door
	Large foredeck with towing bollard
	Large open aft deck with bollards & mounting points
	Bathing platform with dive ladder
Navigation/ Comms	2 x Simrad 9" touch screen plotter / sonar
	Simrad 4G Radar
	Simrad RS40-B fixed VHF/DSC
	Simrad RS40-B AIS Transponder
	Icom M330GE fixed VHF/DSC
	Fusion Stereo System
	Loud hailer/siren system
Electrical / Welfare	LED navigation and deck lights
	LED cabin lights white/red
	LED blue strobe light
	Heads
Optional Extras	Survey boom
	Generator
	Recovery Davit
	Rescue boat/tender



07495 234444

info@rebelmarine.co.uk

www.rebelmarine.co.uk





LIGHTNING REBEL

9.5m Open Rib



General	
Vessel Name	Lightning Rebel
Coding	MCA Category 3R
Call Sign	2IZN7
MMSI	235114063
Capacity	12 PAX + 2 Crew
LOA	9.5m
Beam	3m
Draught	0.8m
Machinery	2 x Yamaha 300HP V6 Outboards
Fuel	Petrol 600L
Manufacturer	Redbay Boats
Speed Cruise/Max	25/35 Knots



Equipment	
Layout	MOB recovery cradle
	12 passenger jockey seats
	2 crew suspension seats
	Large deck with bollards & mounting points
	Large anchor and deck storage lockers
Navigation/ Comms	Large full height console
	Simrad 9" plotter / sonar
	Icom IC-M323G fixed VHF/DSC
	Icom IC-M330GE fixed VHF/DSC
	Garmin AIS Transponder
	Fusion Stereo System
	Loud hailer/siren system
Electrical / Welfare	LED navigation lights
	LED deck lights
	LED cabin lights white/red
	LED blue strobe light
Optional Extras	Survey boom
	Generator
	Recovery Davit
	Rescue boat/tender

07495 234444

info@rebelmarine.co.uk
www.rebelmarine.co.uk





Ballena

Owned by Charterdays

13m Luxury Cruiser



General	
Vessel Name	Ballena
Coding	MCA Category 2 – 60 miles day & night
Call Sign	
MMSI	
Capacity	12 PAX + 2 Crew
LOA	13m
Beam	3.5m
Draught	1.5m
Machinery	2 x Volvo Penta 370HP
Fuel	Diesel 800L
Manufacturer	Fairline
Speed Cruise/Max	18/28 Knots



Equipment	
Layout	Outdoor and indoor seating with tables
	Large rear sunpad
	Sunbed and lounge area on front deck
	Bathing platform with ladder
Navigation/ Comms	Raymarine 12" plotter / sonar
	Raymarine autopilot system
	Raymarine Radar
	Raymarine fixed VHF/DSC
	Raymarine data pack instruments
Electrical / Welfare	Galley unit - microwave - oven/stove - hot/cold water
	Heads and wash basin
	Heating
	240V Shore Power
	Navigation and deck lights
	LED cabin lights white/red
Optional Extras	Drinks packages
	Tender
	Paddleboards

07495 234444

info@rebelmarine.co.uk

www.rebelmarine.co.uk





BEACH REBEL

7m Open Rib



General	
Vessel Name	Beach Rebel
Coding	SASHMA Coded - Solent Waters
Call Sign	2HZU6
MMSI	235107966
Capacity	6 PAX + 1 Crew
LOA	7m
Beam	2.5m
Draught	0.8m
Machinery	1 x Mercury 150HP
Fuel	Petrol 200L
Manufacturer	Shearwater Ribs
Speed Cruise/Max	25/36 Knots



Equipment	
Layout	4 suspension seats
	Seating in front of console
	Large deck with bollards & mounting points
	Large anchor and deck storage lockers
	Large full height console
	MOB recovery cradle
Navigation/ Comms	Simrad 12" touch screen plotter / sonar
	Simrad RS35 VHF/DSC
	Simrad NAIS-500 AIS Transponder
	Fusion Stereo System
Electrical / Welfare	LED navigation lights
	LED deck lights
	LED cabin lights white/red
	LED underwater lights
	LED blue strobe light
Optional Extras	Survey boom
	Generator
	Recovery Davit
	Rescue boat/tender
	Road trailer

07495 234444

info@rebelmarine.co.uk

www.rebelmarine.co.uk



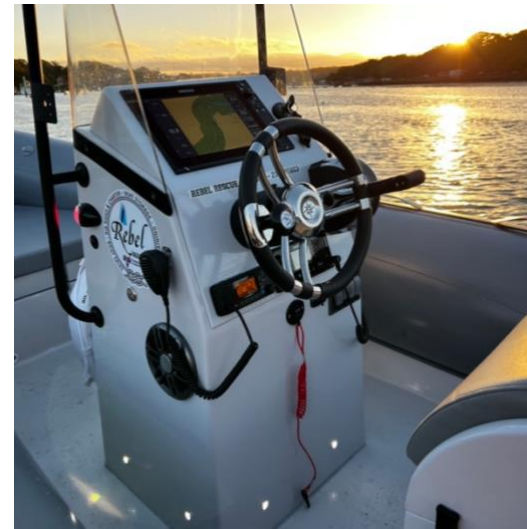


Rebel Rescue

5.5m RIB – Safety/Rescue



General	
Vessel Name	Rebel Rescue
Quantity	1 Available
Call Sign	MNAG7
MMSI	232045803
Capacity	10 Persons
LOA	5.5m
Beam	2.2m
Draught	0.4m
Machinery	Mercury 80HP
Fuel	Petrol 60L
Manufacturer	Northstar
Speed Max	36 Knots



Equipment

Layout	Built in seating
	Large deck with bollards & lifting eyes
	Large anchor and deck storage lockers
	MOB recovery cradle
	Retractable light mast
Navigation/Comms	Simrad 12inch NSS Evo 3 Chartplotter
	Simrad RS40-B Fixed VHF
	Simrad AIS Class B Transponder
	Icom M330GE Fixed VHF
Lighting	LED navigation lights
	LED deck lights
	LED Flood Light
	LED Forward 'headlights' White/Blue
	LED Aft Underwater Lights White/Blue
Optional Extras	LED blue strobe light
	Survey boom
	Generator
	Road trailer
	Launch Vehicle
	Mother Ship

07495 234444

info@rebelmarine.co.uk

www.rebelmarine.co.uk



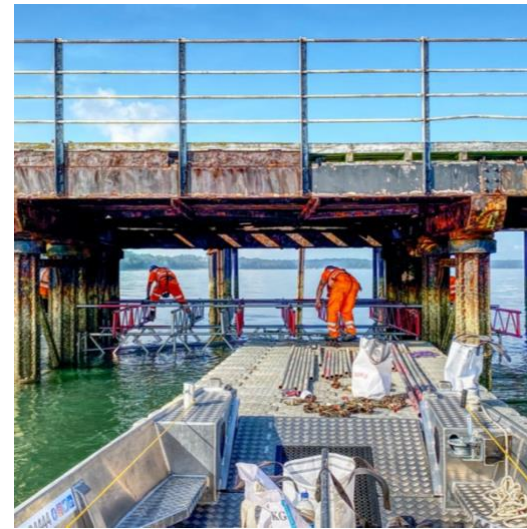


REBEL LANDER

7m Open Landing Craft



General	
Vessel Name	Rebel Lander
Quantity	1 Available
Call Sign	MKEP4
MMSI	232038596
Capacity	10 Persons
LOA	7m
Beam	2.4m
Draught	0.2m
Machinery	Yamaha 80HP
Fuel	Petrol 40L
Manufacturer	HasCraft Boats
Speed Max	25 Knots



Equipment

Layout	Landing Craft Front Loading Ramp
	Built in seating
	Push Bow Fendering
	Large deck with bollards & mounting/lifting points
	Large anchor and deck storage lockers
	Large detachable bench seat
	2 Manual coupling winches
Navigation/Comms	Technical Rescue Stretcher
	Simrad fixed VHF
	Simrad 9inch chartplotter
	Simrad class B AIS transponder
Electrical	Icom fixed VHF
	LED navigation & deck lights
Optional Extras	Survey boom
	Generator
	Dive Ladder
	Recovery Davit
	Road Trailer and or Launch Vehicle
	Mother Ship
LED blue strobe light	

07495 234444

info@rebelmarine.co.uk

www.rebelmarine.co.uk





REBEL DEFENDER

6M Open Work/Safety Boat



General	
Vessel Name	Rebel Defender
Quantity	1 Available
Call Sign	MAXN2
MMSI	232048150
Capacity	6 Persons
LOA	6m
Beam	2.1m
Draught	0.2m
Machinery	Yamaha 70HP
Fuel	Petrol 50L
Manufacturer	Aluva
Speed Max	25 Knots



Equipment	
Layout	Built in seating
	Push Bow Fendering
	Large deck with bollards & mounting/lifting points
	Large anchor and deck storage lockers
	Large bench seating
	2 Manual coupling winches
	Technical Rescue Stretcher & boarding ladder
Navigation/Comms	Simrad fixed VHF
	Simrad 9inch chartplotter
	Simrad Halo 20+ Radar
	Simrad class B AIS transponder
	Simrad Wind Instrument with Display
	Icom fixed VHF
Electrical	LED navigation, deck & flood lights
	LED blue & amber strobe lights
Optional Extras	Survey boom
	Generator
	Dive Ladder
	Road Trailer and or Launch Vehicle
	Mother Ship

07495 234444

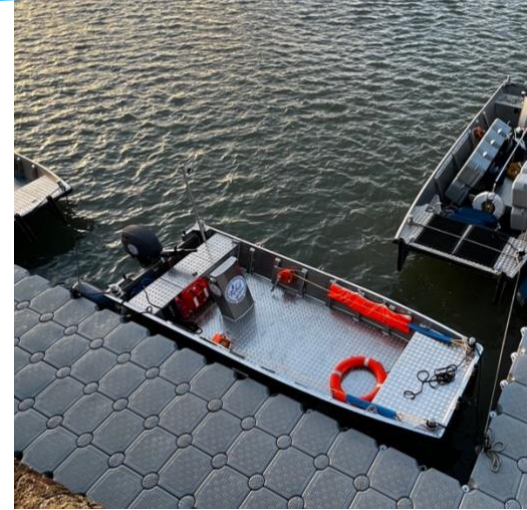
info@rebelmarine.co.uk
www.rebelmarine.co.uk





Rebel Six

5m Open Work/Safety Boat



General	
Vessel Name	Rebel Six
Quantity	1 Available
Call Sign	MMZQ3
MMSI	232045745
Capacity	6 Persons
LOA	5m
Beam	1.85m
Draught	0.2m
Machinery	Yamaha 40HP
Fuel	Petrol 60L
Manufacturer	HasCraft Boats
Speed Max	20 Knots



Equipment	
Layout	Built in seating
	Push Bow Fendering
	Large deck with bollards & mounting points
	Large anchor and deck storage lockers
	MOB recovery cradle
Navigation/Comms	2 Manual coupling winches
	Simrad 9inch NSX Chartplotter
	Simrad RS40-B Fixed VHF
Lighting	Simrad AIS Class B Transponder
	LED navigation lights
Optional Extras	LED deck lights
	LED blue strobe light
	Survey boom
	Generator
	Recovery Davit
	Road trailer
	Launch Vehicle
Mother Ship	

07495 234444

info@rebelmarine.co.uk

www.rebelmarine.co.uk



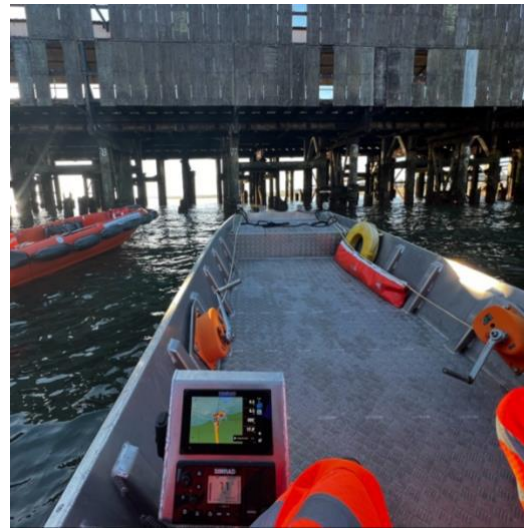


Rebel Five

5m Open Work/Safety Boat



General	
Vessel Name	Rebel Five
Quantity	1 Available
Call Sign	MLYT9
MMSI	232043120
Capacity	6 Persons
LOA	5m
Beam	1.85m
Draught	0.2m
Machinery	Yamaha 40HP
Fuel	Petrol 60L
Manufacturer	HasCraft Boats
Speed Max	20 Knots



Equipment

Layout	Built in seating
	Push Bow Fendering
	Large deck with bollards & mounting points
	Large anchor and deck storage lockers
	MOB recovery cradle
Navigation/Comms	2 Manual coupling winches
	Simrad 7inch NSX Chartplotter
	Simrad RS40-B Fixed VHF
Optional Extras	Simrad AIS Class B Transponder
	LED navigation lights
	LED deck lights
	LED blue strobe light
	Survey boom
	Generator
	Recovery Davit
	Road trailer
Launch Vehicle	
Mother Ship	

07495 234444

info@rebelmarine.co.uk

www.rebelmarine.co.uk



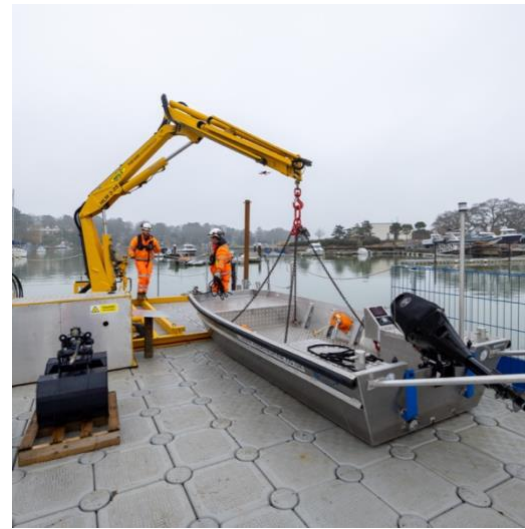


Rebel Four

4m Open Work/Safety Boat



General	
Vessel Name	Rebel Four
Quantity	1 Available
Call Sign	MMOS3
MMSI	232044721
Capacity	6 Persons
LOA	4m
Beam	1.85m
Draught	0.2m
Machinery	Suzuki 20HP
Fuel	Petrol 25L
Manufacturer	HasCraft Boats
Speed Max	20 Knots



Equipment	
Layout	Built in seating
	Push Bow Fendering
	Large deck with bollards & mounting points
	Large anchor and deck storage lockers
	MOB recovery cradle
Navigation/Comms	2 Manual coupling winches
	Simrad fixed VHF
	Simrad 7inch NSX Chartplotter
Electrical	Simrad AIS Class B Transponder
	LED navigation lights
Optional Extras	LED deck lights
	LED blue strobe light
	Survey boom
	Generator
	Recovery Davit
	Road trailer
	Launch Vehicle
Mother Ship	



07495 234444

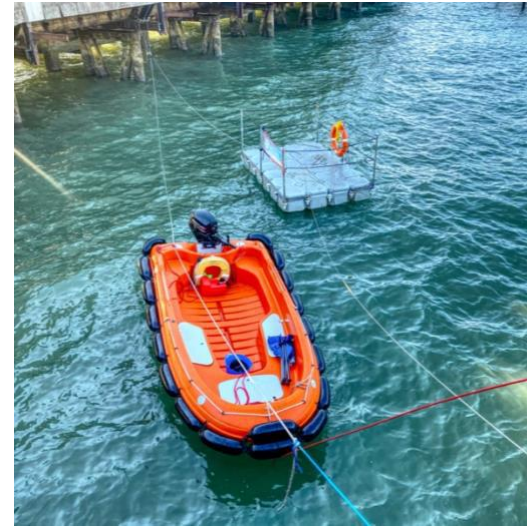
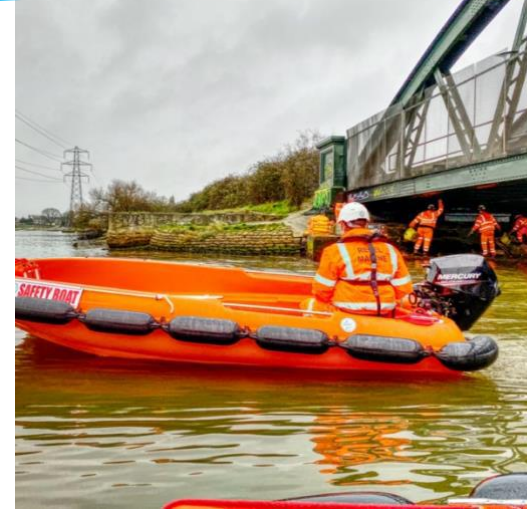
info@rebelmarine.co.uk
www.rebelmarine.co.uk





RIGIFLEX BOATS

4m Open Work/Safety Boats



General	
Vessel Name	Rigiflex Boats
Quantity	2 Available
Call Sign	N/A - Handheld VHF
MMSI	N/A - Handheld VHF
Capacity	7 Persons
LOA	4m
Beam	1.9m
Draught	0.3m
Machinery	Mercury 20HP
Fuel	Petrol 20L
Manufacturer	Rigiflex Boats
Speed Max	16 Knots



Equipment

Layout	Built in seating
	Seating in front of console
	Large deck with cleats & mounting points
	Large anchor and deck storage lockers
	MOB recovery cradle
Navigation/Comms	Icom handheld VHF
	Handheld GPS
	Flares
Optional Extras	LED navigation lights
	LED deck lights
	LED blue strobe light
	Survey boom
	Generator
	Recovery Davit
	Road trailer
	Push Bow
Launch Vehicle	
Mother Ship	

07495 234444

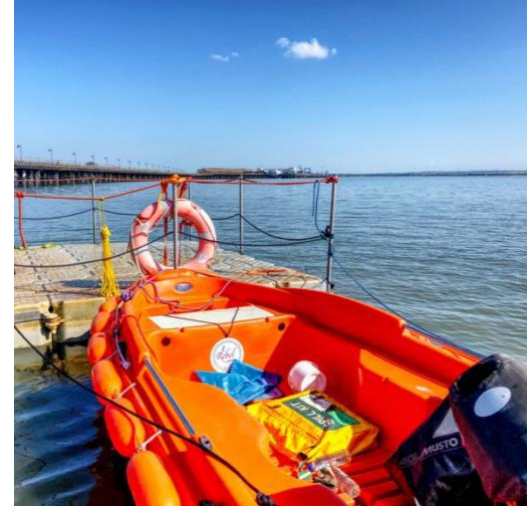
info@rebelmarine.co.uk

www.rebelmarine.co.uk

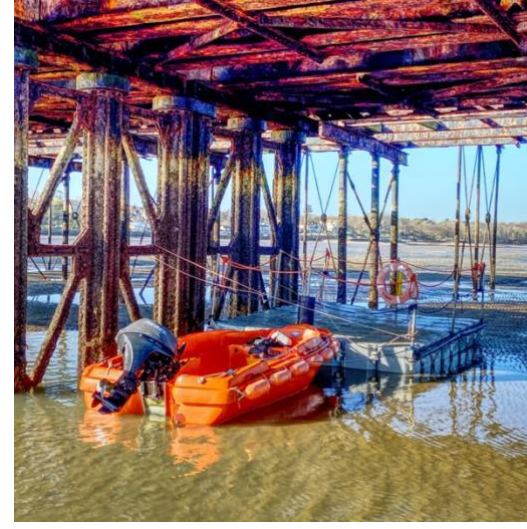




RIGIFLEX BOATS 3.6m Open Work/Safety Boats



General	
Vessel Name	Rigiflex Boats - 2 Available
Quantity	2 Available
Call Sign	N/A - Handheld VHF
MMSI	N/A - Handheld VHF
Capacity	6 Persons
LOA	3.6m
Beam	1.68m
Draught	0.3m
Machinery	Suzuki 20HP
Fuel	Petrol 20L
Manufacturer	Rigiflex Boats
Speed Max	16 Knots



Equipment	
Layout	Built in seating
	Seating in front of console
	Large deck with cleats & mounting points
	Large anchor and deck storage lockers
	MOB recovery cradle
Navigation/ Comms	Icom handheld VHF
	Handheld GPS
	Flares
Optional Extras	LED navigation lights
	LED deck lights
	LED blue strobe light
	Survey boom
	Generator
	Recovery Davit
	Road trailer
	Push Bow
	Launch Vehicle
Mother Ship	

07495 234444

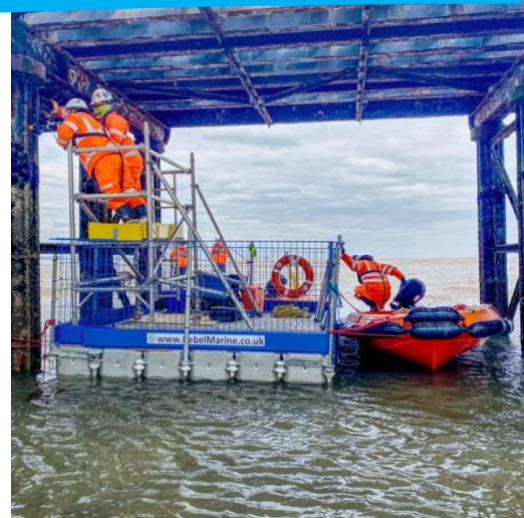
info@rebelmarine.co.uk
www.rebelmarine.co.uk





MODULAR PONTOONS

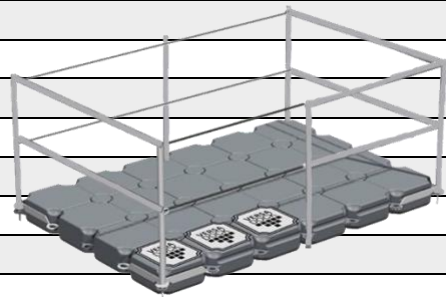
VersaDock



General	
Name	VersaDock Modular Pontoons
Capacity	Varies dependent on float type and layout
Size	Can be built to any size and shape
Applications	Film & Television
	Survey & Inspection
	Temporary Mooring
	Repair & Maintenance
	Temporary Walkways
	Plant & Machinery
	Media & Events
	Restricted Access
Scaffold Platform	



Equipment	
Transport	In-house transport by road
	In-house transport by water
Optional Extras	Hand rails
	Ladder
	Fully Foldable Marine Crane
	Anchors
	Outboard Bracket
	Winch
	Survey boom
	Generator
	Road trailer
	Spud legs
	Launch Vehicle
	Mother Ship
	Rescue/safety boat
	LED navigation lights
LED deck lights	



07495 234444

info@rebelmarine.co.uk

www.rebelmarine.co.uk

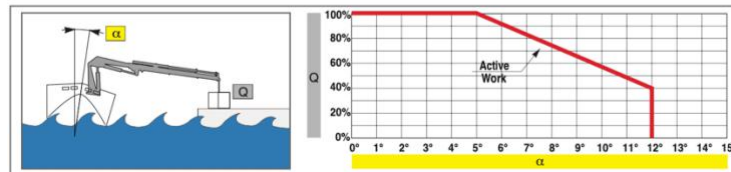
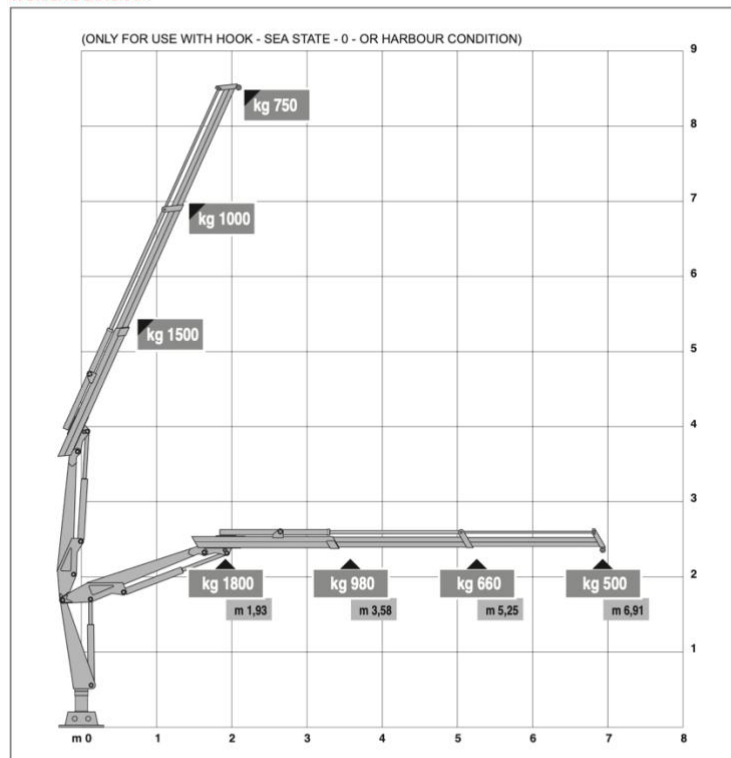




MODULAR CRANE PONTOON VersaDock



FULLY FOLDABLE CRANE
HLM 3-2S MODEL



Huge variety of uses such as Heavy Lifting, Piling, lifting pontoon spud legs and general marine works. Ultra-shallow draft allows us to access places larger multicats cannot reach. Can be mobilised by water or dismantled for road transport to site, crane can self-load and service its working deck and spud legs.

General	
Vessel Name	Rebel Barge
Quantity	Multiple Available
Capacity	24 Tonnes
LOA	12m
Beam	6m
Draught	0.15m
Machinery	Twin Electric Spud Leg Motors
Crane	Heila HLM 3-2S & Powerpack
Manufacturer	VersaDock/Heila/Rebel Marine



Equipment

Layout/Equipment	1 x Foldable Marine Crane with Aux QR connections
	2 x 8m spud legs
	2 x Electric spud lifters
	Moonpool
	Pile Driving Frame
	Hydraulic Powerpack
	Handrailing/Cleats & Towing/Cargo Eyes
	Heavy Duty Fendering
	2 x Heavy Duty Loading Ramps
	Life Saving Equipment
Dive Ladder	
Electrical	LED navigation lights
	LED deck lights
Optional Extras	Hydraulic Grab Bucket and Rotator
	Hydraulic Crane Winch
	Generator
	Qualified Operator
	Swim End
	Workshop/Store



07495 234444

info@rebelmarine.co.uk
www.rebelmarine.co.uk

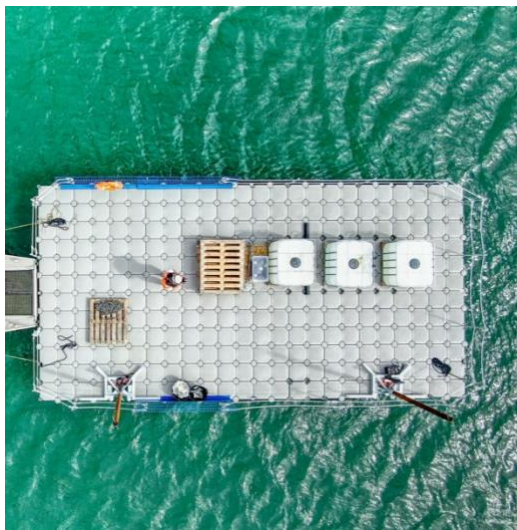




REBEL SPUD LEG BARGE Modular Pontoon



General	
Vessel Name	Rebel Spud Leg Barge
Quantity	Multiple Available
Call Sign	N/A
MMSI	N/A
Capacity	24 Tonnes
LOA	12m
Beam	6m
Draught	0.2m
Machinery	Twin Electric Spud Leg Motors
Fuel	N/A
Manufacturer	VersaDock



Equipment	
Layout/Equipment	2 x 8m spud legs
	2 x Electric spud lifters
	Moonpool
	Pile Driving Frame
	Handrailing
	Cleats & Towing/Cargo Eyes
	Heavy Duty Fendering
	2 x Heavy Duty Loading Ramps
	Life Saving Equipment
	Stiffening Beams
Electrical	LED navigation lights
	LED deck lights
Optional Extras	Foldable Marine Crane
	Survey boom
	Generator
	Dive Ladder
	Recovery Davit
	Swim End
	Welfare Cabins
Workshop/Store	

07495 234444

info@rebelmarine.co.uk
www.rebelmarine.co.uk

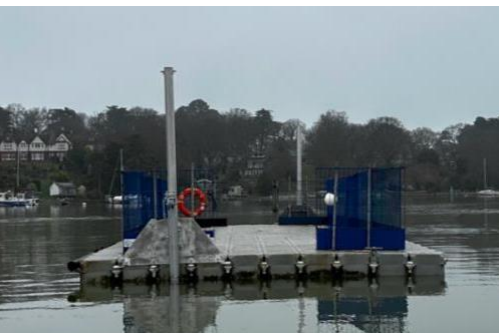




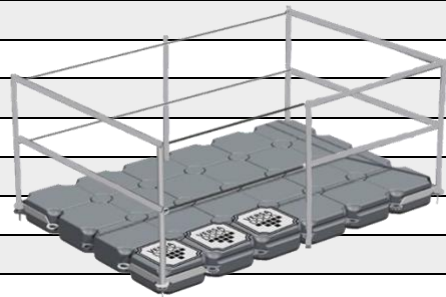
MANUAL FOLDING SPUD LEGS



General	
Name	Manual Folding Spud Legs
Length	5m, 7.5m or 10m
Modular Pontoon	Can be built to any size and shape
Applications	Film & Television
	Survey & Inspection
	Temporary Mooring
	Repair & Maintenance
	Temporary Walkways
	Plant & Machinery
	Media & Events
	Restricted Access
Scaffold Platform	



Equipment	
Transport	In-house transport by road
	In-house transport by water
Optional Extras	Hand rails
	Ladder
	Fully Foldable Marine Crane
	Anchors
	Outboard Bracket
	Winch
	Survey boom
	Generator
	Road trailer
	Crane
	Launch Vehicle
	Mother Ship
	Rescue/safety boat
	LED navigation lights
LED deck lights	



07495 234444

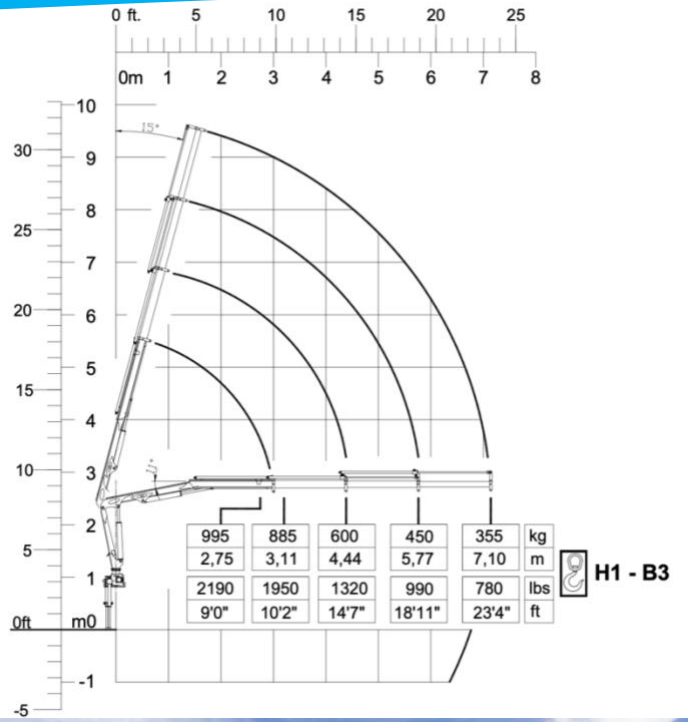
info@rebelmarine.co.uk

www.rebelmarine.co.uk





CRANE TRAILER



Ideal for delivering our vessels, pontoons and equipment to sites and getting to those hard-to-reach places. This trailer mounted crane is unique with its clever dolly system that lets it roll along the bed of the trailer. This allows it to be stowed over the axles when the trailer is empty to keep the nose weight of the trailer safe and well under the legal limit.

General	
Vessel Name	Rebel Crane Trailer
LOA	7m
Beam	2.3m
Crane	Copma 35 & Powerpack
Manufacturer	Copma/Moose Cranes



Features	
Crane Layout/Equipment	Foldable Crane
	Track mounted crane dolly to roll up & down the bed
	Radio Remote Control
	Adjustable and selectable height & slew restrictors
	Hydraulic stabilisers
	Hydraulic Powerpack
Trailer Layout/Equipment	Sensors/alarm on locking pins
	Front and rear stabilisers
	2 x Heavy Duty Loading Ramps
	Storage boxes
	Lashing eyes
	LED trailer lights
	LED flood lights
2 x Heavy Duty Loading Ramps	
Optional Extras	Hydraulic Crane Winch
	Generator
	Qualified Operator
	Electric Trailer Winch
	Welfare Cabins and Workshop/Store
	Lifting beams and bespoke lifting equipment

07495 234444

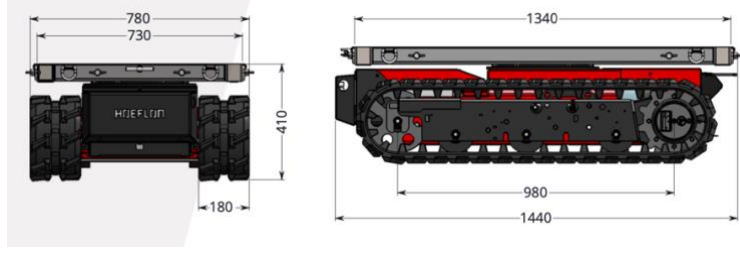
info@rebelmarine.co.uk
www.rebelmarine.co.uk





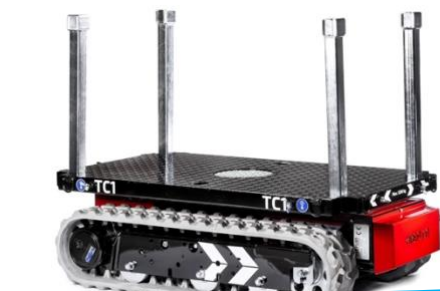
Tracked Carrier TC1

100% electric 



The TC1 carrier is the solution for transport of long, heavy materials, equipment and pontoons at a project site. The carrier is compact and just 80 cm wide, and items can be placed on it in the length or width. The radio remote controlled carrier is perfect for transporting material, such as steel beams, through small access doors and less easily accessible areas. No more heavy lifting for your personnel. Ergonomic, efficient and safe!

General	
Vessel Name	Rebel Tracked Carrier – TC1
Length	1450mm
Width	800mm
Capacity	1200kg
Manufacturer	Hoeflon



Features

Details	Compact, strong and robust
	Precisely manoeuvrable
	Easy to attach load
	Extendible platform
	Silent thanks to electric drive
	Swivel platform
	Non-marking tracks
	230v and 110v charging
	Radio remote control
	LED lights
Attachments/ Optional Extras	Lashing eyes
	Can carry a load of 1200kg. Thanks to the crawler tracks, the carrier can easily drive over a rough surface yet causes no damage to finished floors.
	Tow bar / Ball Hitch
	Heavy Duty Loading Ramps
	Operator
	Electric Winch
Grass / Bog Mats	
Crane trailer & bespoke lifting equipment	

07495 234444

info@rebelmarine.co.uk

www.rebelmarine.co.uk





'Land Fleet'

Our Road Going Workhorses



Ideal for delivering our vessels, pontoons and equipment to sites and getting to those hard-to-reach places. Our fleet of vehicles and plant mean we are able to transport any of our kit to sites across the country in house, meaning we are not reliant on third parties. Our diverse range of kit, allows us to react and adapt to our client's needs.

We have 11 trailers in the fleet, from hydraulic tilting flatbeds, roller boat trailers to a trailer mounted crane and more! Our JCB telehandler is the workhorse of our yard, busy loading & unloading deliveries as well as lifting boats in/out of the water from our quayside and slipway.



07495 234444

info@rebelmarine.co.uk

www.rebelmarine.co.uk





Hovercraft

By Griffon Hoverwork

6.8m Hovercraft



General	
Vessel Name	Griffon 380TD
Coding	MCA Category 2 – 60 miles day & night
Call Sign	-
MMSI	-
Capacity	5 PAX + 1 Crew
LOA	6.8m
Beam	3.76m
Draught	N/A
Machinery	1 x VW 63kW 1 x Briggs & Stratton
Fuel	Diesel 60L
Manufacturer	Griffon Hoverwork
Speed Max	28 Knots



Equipment	
Layout	Amphibious
	Seating for 6
	Rigid Aluminium Hull
	Inflatable Sponsons
	Landing pads on the underside
	Heavy Duty Skirt
	Lifting Eyes
Navigation/ Electrical	Road Trailer
	Nav Lights
	Orange Strobe
	4 x Bilge Pump
Optional Extras	H/H VHF/DSC
	Work Lights
	Search Light
	Survey Equipment
	Launch Vehicle
	Mothership

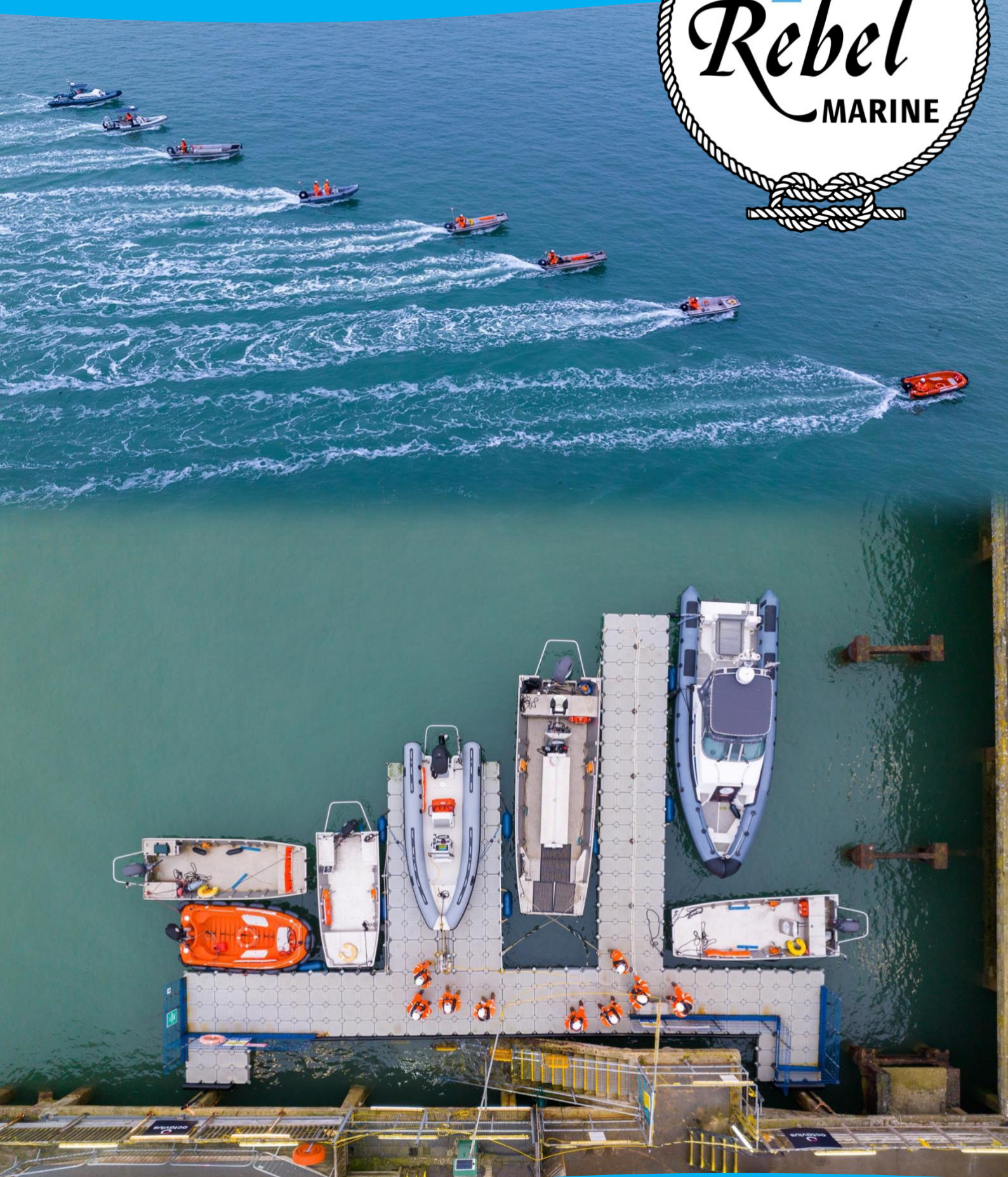


07495 234444

info@rebelmarine.co.uk

www.rebelmarine.co.uk

Checkout our latest showreel
<https://youtu.be/EipLs7lvvmI>



07495 234444

info@rebelmarine.co.uk

www.rebelmarine.co.uk

